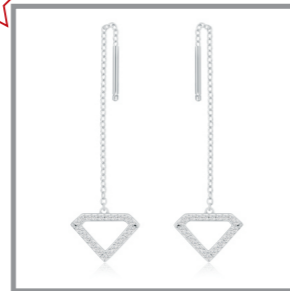
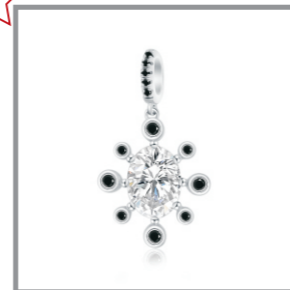
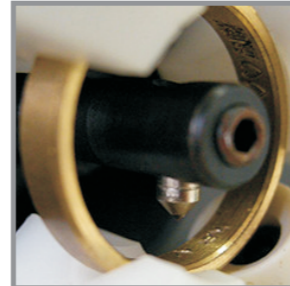




Rico R. Rauschmayer / CEO

"Put us to the test; we will look forward to it"



# STAR CREATIONS

Pforzheim Branch  
Karlsruher Straße 8g  
75179 Pforzheim / Germany

Tel.: + 49 7231 3805-48 (DE)  
Tel.: + 86 20 3483 0422 (CN)  
Add: Flat E&F 18/F Neich Tower, 128  
Glocester Road, Wanchai ,Hong Kong  
team@star-creations-international.com



## SCI at a glance

- ☆ Jewellery manufacturer founded in 2005 in Panyu, Guangzhou, China – approx. 150 km from Hong Kong.
- ☆ 100 % German ownership and management - our motto is "German Quality, Chinese Prices".
- ☆ Over 500,000 goods sold every year.
- ☆ Production methods: continuous cast tube production, 5-axis CNC, centrifugal casting, die cutting.
- ☆ Alloys: 925 sterling silver, 8/9/14/18 carat gold.
- ☆ Custom jewellery: stainless steel 316L, brass, leather, pearls etc.
- ☆ Coating: in-house electroplating for a variety of coating thicknesses and colours, IP (ion plating).
- ☆ Services: design services, CAD experts, sample and masterpiece service, worldwide sales representatives.
- ☆ Delivery periods: between 2 and 8 weeks depending on the product.
- ☆ Clientele: jewellery and lifestyle brands, wholesalers, chain stores, e-commerce.
- ☆ Reference customers: for the sake of discretion, please ask us for these.

## Who is Star Creations International ?

- ☆ SCI is a jewellery factory with an affiliated design agency and outsourcing agency. We regard ourselves as a manufacturing service provider for any jewellery demand and problem.
- ☆ Founded in 2005, SCI belongs to the Rauschmayer Group, which has been successfully active in the jewellery sector since 1962 with reliability and high standards of quality for international customers.
- ☆ SCI is an owner and family-run company in its second generation, with Rico Roland Rauschmayer at the head of a team of administration and production staff which is unique in China and has been with the company for many years. Several hundred pairs of hands provide our customers with comprehensive support. In order to ensure that, we have the best experts and that stay with the company for a long time. We pay above-average wages in comparison with the rest of the sector.
- ☆ We have all the necessary licences for manufacturing jewellery (approx. 25 in total), have received positive results in a number of independent and key account audits, and have exemplary occupational safety and social security benefits, as well as modern and efficient product facilities. You can see all this for yourself during a visit to China with a factory tour? airport pick-up, accommodation and a traditional Chinese evening meal included!
- ☆ At SCI, we can discuss your requirements in a number of languages: Chinese, German, English and Spanish are our native languages. For our European customers, we have a branch in Pforzheim for customer service and design.

## Product portfolio

- ☆ The majority of our business is ODM. We have tailored our work flow towards customers individual design requests and requirements. Our advantage is the ability to design and develop upon customers ideas and concepts, improve existing collections and advise along the way.
- ☆ In addition we develop our own extensive OEM design collection twice a year comprised of fashionable jewellery sets in different manufacturing procedures for various alloys.
- ☆ Regardless, the leading goal is an exceptional product margin and quality standard. Direct factory purchase is your guarantee for attractive, high returns merchandise.
- ☆ We have the following production methods in-house:
  - *Continuous casting* for the seamless manufacture of very hard monochrome and multicoloured rings, with CNC turning and 5-axis milling.
  - *Centrifugal casting* for any jewellery creations manufactured in sterling silver and gold alloys.
  - *Die cutting* for particularly homogeneous surfaces and light products in stainless steel.
  - *Mounting* usually for costume jewellery with several components.
- ☆ Profound in many setting styles using microscopes with high quality results.
- ☆ Our extensive network of accessories suppliers enable us to support in the field of jewellery accessories such as displays and packaging boxes. We pack and ship as per your requirements!

## Service portfolio

- ☆ Collection and product development in the service branch in Pforzheim or at your headquarters. From pencil – CAD - animated KeyShot photo, we will show you your product even before it enters the world.
- ☆ Masterpiece and sample service for final approval.
- ☆ Support from the sales representatives and customer service in Germany.
- ☆ Logistics and storage service on request.
- ☆ Loyalty and key account discounts.

## Our customers value us because...

- ☆ ... it is fun to open our deliveries and to feel the products.
- ☆ ... we provide a consistently high quality year after year.
- ☆ ... our price / performance ratio is unparalleled.
- ☆ ... our prices are largely stable.
- ☆ ... we provide comprehensive support, as well as production and delivery.
- ☆ ... we can combine the price advantages of Asian production with German quality, reliability and punctuality.
- ☆ ... we accept responsibility if we do make a mistake.